

# MONTHLY MEMBERSHIP PROGRESS REPORT

District 317 B

Results as of: 11/30/2023

GMT:

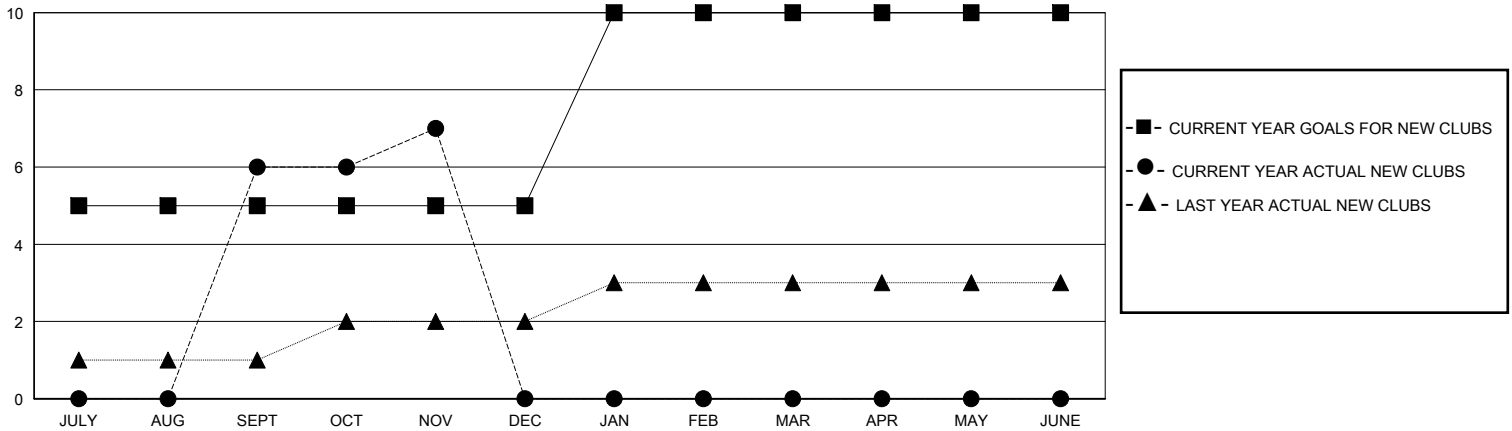
LOCATION INDIA

GMT CA

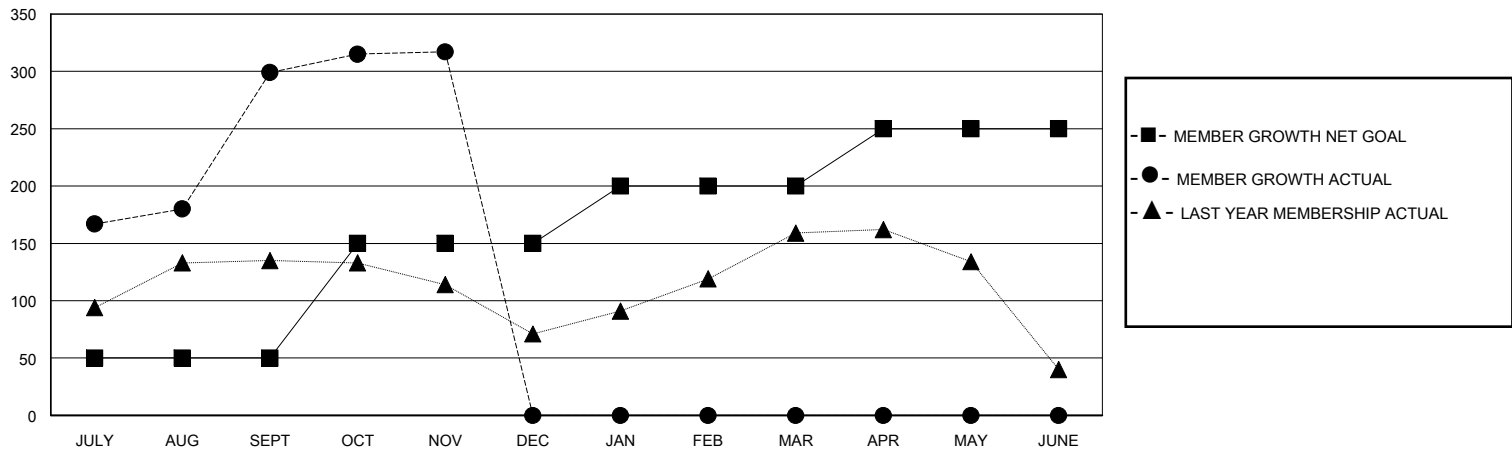
Clubs			
RESULTS FOR 2023-2024			
QUARTER	NEW CLUB GOAL	NEW CLUBS	DROPPED CLUBS
JULY/AUG/SEPT	5	6	0
OCT/NOV/DEC	0	1	0
JAN/FEB/MAR	5	0	0
APR/MAY/JUNE	0	0	0

Members			
RESULTS FOR 2023-2024			
QUARTER	MEMBER GROWTH NET GOAL	MEMBER GROWTH ACTUAL	DROPPED MEMBERS ACTUAL (including transfers)
JULY/AUG/SEPT	50	371	65
OCT/NOV/DEC	100	51	32
JAN/FEB/MAR	50	0	0
APR/MAY/JUNE	50	0	0

GOALS AND ACTUAL NEW CLUBS CUMULATIVE



GOALS AND ACTUAL MEMBERS CUMULATIVE



DROPPED CLUBS: 0	61 CLUBS OF 111 ADDED 1 OR MORE NEW MEMBERS	<u>GENDER DISTRIBUTION</u>	
<u>DROPPED MEMBERS</u>		MALE	3,009 (78.07%)
DECEASED	5	FEMALE	845 (21.93%)
CLUB CANCELLED	0	TOTAL FAMILY UNIT MEMBERS 1,336	
OTHER	92	FAMILY MEMBERS PAYING HALF DUES 734	
<b>TOTAL</b>	<b>97</b>		

[CLICK HERE FOR CUMULATIVE MEMBERSHIP DATA](#)